

## IMPORTANT NOTICE TO ALL BUSINESSWORKS USERS USING BW 2011 (or older):

Effective January 1, 2026, the Illinois Department of Revenue (IDOR) income tax withholding rate is unchanged and remains at 4.95%, and the minimum wage remains \$15.00/hour. To accommodate these changes, you must make some adjustments to your Illinois Allowances Limits and Rates in BusinessWorks **before** processing your **first** payroll for 2026.

Effective January 1, 2026, the Illinois Department of Employment Security (IDES) released new rates and limits for 2026. IDES states the taxable wage limitation used to calculate state unemployment insurance (SUI) has been raised to \$14,250 (higher than 2025). IDES set contribution rates for 2026 that range from .750% to 7.05%. To accommodate these changes, you must make some adjustments to your Illinois Allowances Limits and Rates in BusinessWorks **before** processing your **first** payroll for 2026.

Effective January 1, 2026, the Internal Revenue Service has issued new tax tables and other wage withholding allowances, limits and rates. To accommodate these changes, you must make some adjustments to your BusinessWorks payroll tax tables **before** processing your **first** payroll for 2026.

Effective January 1, 2020 (and after), new employees must submit the revised 2020 Form W-4. Current employees do not need to submit a new form unless the need to change their withholdings. Please refer to the “**2020 Form W-4 Overview**” and “**How to use 2020 Form W-4 for BusinessWorks v2011 and older**” documents in the BusinessWorks page on FLIsupport.com.

All of the actions you need to perform the above are detailed on the following pages. Please contact FLI Customer Support if you have any questions regarding how to make these changes.

---

**READ THIS ENTIRE DOCUMENT BEFORE MAKING ANY CHANGES**

---

### IMPORTANT NOTICES:

- SUI changes are listed only for employers who pay unemployment insurance premiums to Illinois Department of Employment Security. Contact FLI Support if you pay unemployment insurance premiums state(s) other than Illinois.
- These changes **do not** affect Federal Unemployment (FUTA) limits or rates.
- **Do NOT** perform these steps until **after** you have completed your **last** payroll processing for 2025.
- **Do** perform the following steps **before** processing your **first** payroll for 2026.

## 2026 State of Illinois Unemployment Insurance Liability

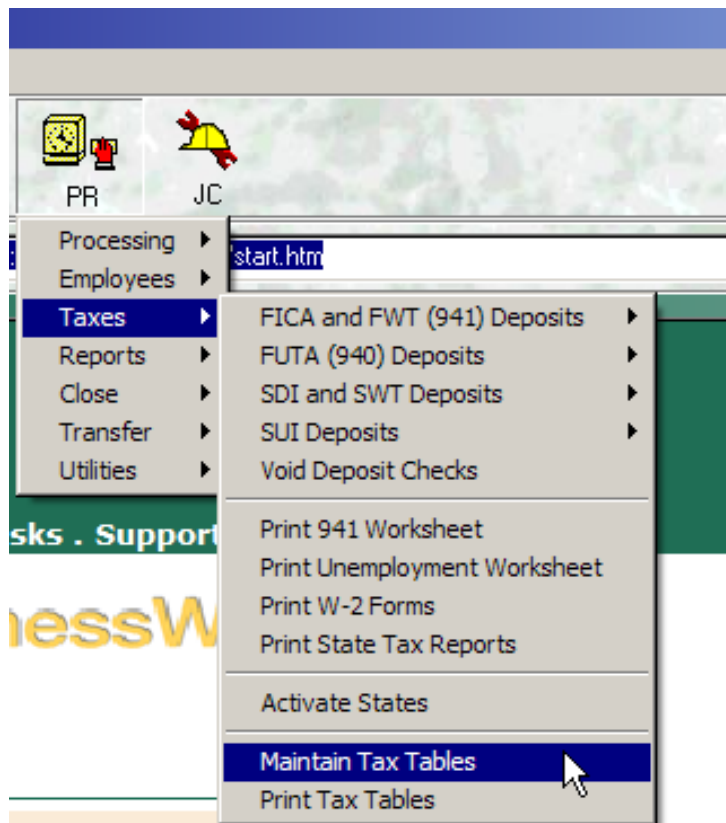
### Overview

Effective January 1, 2026, the Illinois Department of Revenue (IDOR) income tax withholding rate is unchanged and remains 4.95%, and the minimum wage remains \$15.00/hour. Also the Illinois Department of Employment Security (IDES) states the taxable wage limitation used to calculate state unemployment insurance (SUI) increased to \$14,250.00. IDES decreased the contribution rates for 2026 that range from .750% to 7.05%. Because unemployment rates vary from company to company, BusinessWorks will not inherently recognize the correct rate, meaning this adjustment must be manually recorded in BusinessWorks for every company you process payroll. This document provides step-by-step instructions to be performed **AFTER processing your last payroll for 2025, and BEFORE processing your first payroll for 2026.**

***Multiple Company Considerations: Complete these State instructions in every company from which you perform payroll processing.***

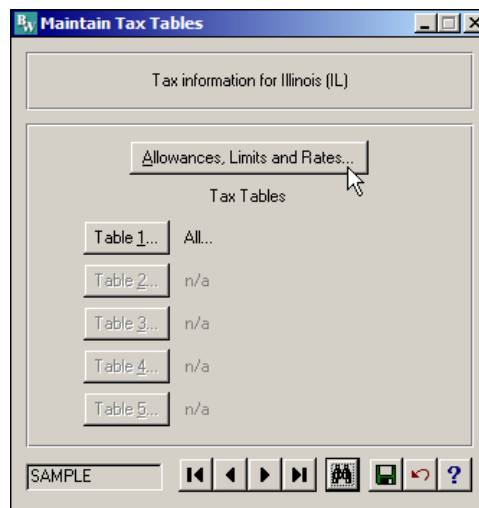
### Confirm Illinois SUI Wage Limitation and Change Income Tax Withholding Rate

- 1) In the Payroll Module, go to Taxes > Maintain Tax Tables



## Confirm Illinois SUI Wage Limitation and Change Income Tax Withholding Rate (continued)

- 2) In the Maintain Tax Tables Window, the “Tax Information for Illinois (IL)” should automatically appear. If not, use the “binocular” button at the bottom to find the Illinois table. Click the Allowances, Limits and Rates button.



- 3) Change the SUI Limit to **14,250.00**. NOTE: The SUI Rate defined in this screen represents a “default” rate when you create new companies and is not used to calculate your SUI liability. The rate used to calculate your SUI liability is maintained in the Activate States screen. You may change the SUI Rate in this screen to match your 2026 contribution rate, but it is an inconsequential change.

SDI Rate		
	Rate	Limit
Company	0.0000	0.00
Employee	0.0000	0.00

SUI Rate		
	Rate	Limit
Company	3.9000	14250.00
Employee	0.0000	0.00

Deductions				

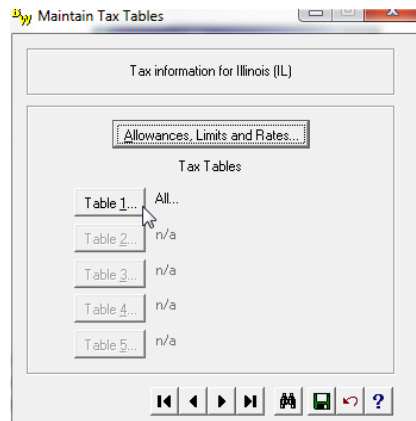
Exemptions		
Regular	2000.00	
Extra	1000.00	0.00
	0.00	0.00
	0.00	

Credits	
Per regular exemption	0.00
Per extra exemption	0.00

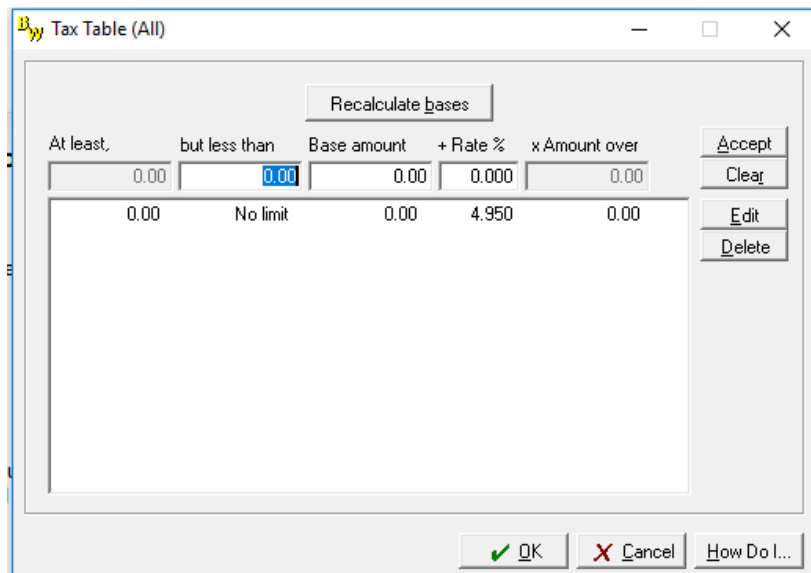
- 4) After changing the SUI Limit, click OK at the bottom of the screen. This will return you to the Maintain Tax Tables screen.

## Confirm Illinois Income Tax Withholding Rate

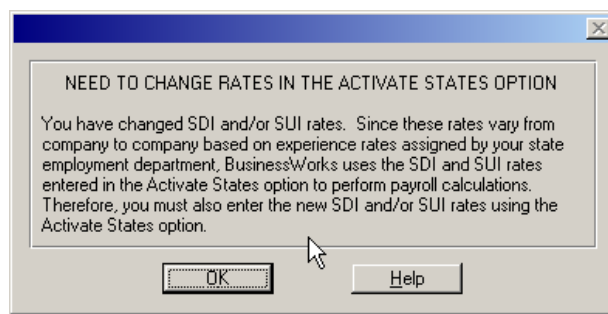
- 5) The Illinois income tax withholding rate is unchanged at 4.95%. Click on Table 1.



- 6) If the line that appears does not show 4.95, click on the line, click Edit, change the rate to 4.950, click Accept, then click OK

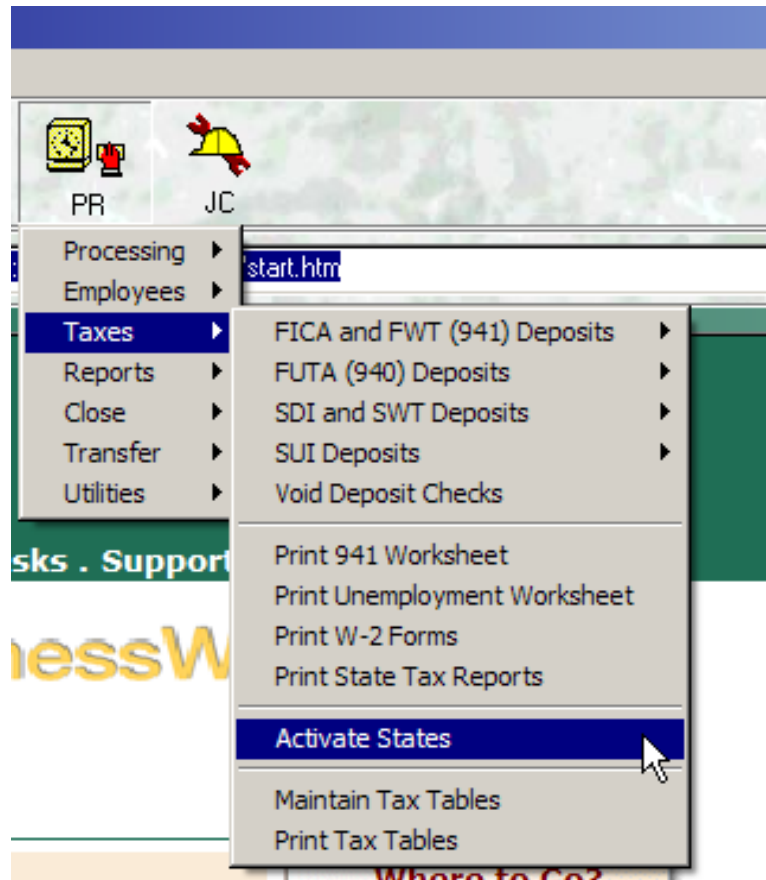


- 7) Click Save in the toolbar at the bottom of the Maintain Tax Tables screen (the button with the green diskette image). After saving, you will receive a popup message telling you the SUI rate must be changed in the Activate States screen (as shown below). This is an informational message only; simply click OK to continue, and then close the Maintain Tax Tables screen.

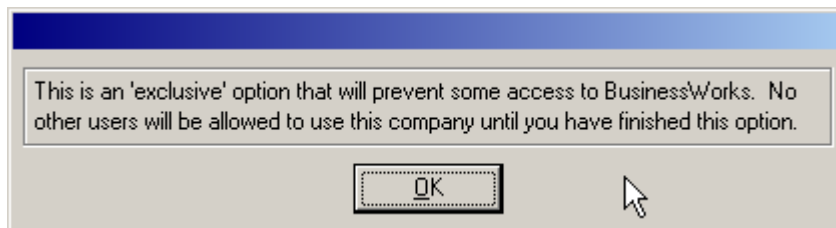


## Change SUI Rate in Activate States

- 1) In the Payroll module, go to Taxes > Activate States, and then click OK on the “Exclusive Option” popup.



BW Gold



## Change SUI Rate in Activate States (continued)

- 2) When the Activate States screen appears, type IL in the State field and then tab to the next field. Your state information will now appear.

SDI		Rate Adjust		SUI		Rate Adjust	
Company	n/a	n/a		Company	4.7000	Yes	
Employee	n/a	n/a		Employee	n/a	n/a	

Posting accounts	Account	Description
SWT withheld	3221.00	State Tax Withheld
Company SDI payable	n/a	
Employee SDI withheld	n/a	
Company SUI payable	3223.00	State Unemployment
Employee SUI withheld	n/a	

- 3) Change the SUI Rate to the 2026 contribution rate provided by IDES for the company you are currently logged into\*. If you have not received a 2026 contribution rate for this company, you can find it in your MyTaxIllinois account or contact IDES to obtain the correct rate. Since BusinessWorks calculates SUI liability with each payroll, it is **very important** you enter the correct rate **AFTER processing your last payroll for 2025, and BEFORE processing your first payroll for 2026.** If you process 2026 payroll prior to setting this rate, you will be forced to expend manual effort to adjust SUI liabilities later. (Hint: If you have not previously entered your State Tax ID, you may be required to do so before establishing your SUI Rate)
- 4) Click Save, and then close the Activate States screen.
- 5) Repeat steps 1 – 4 for each company in which you perform payroll processing. You do not need to repeat this in companies where payroll is not used.

\* - **NOTE:** Your SUI contribution rate may vary depending on the total wages paid. If you have a contribution rate when total wages are less than \$50,000, and a different rate when total wages are more than \$50,000, use the rate that corresponds to what you anticipate your total wages will be for all employees for the first quarter of 2026. If your total wages change for subsequent quarters in 2026 you must change your SUI rate as close as possible to the beginning of that quarter

## 2026 Federal Wage Withholding (based on 2026 IRS Publication 15 (Circular E) Employer's Tax Guide)

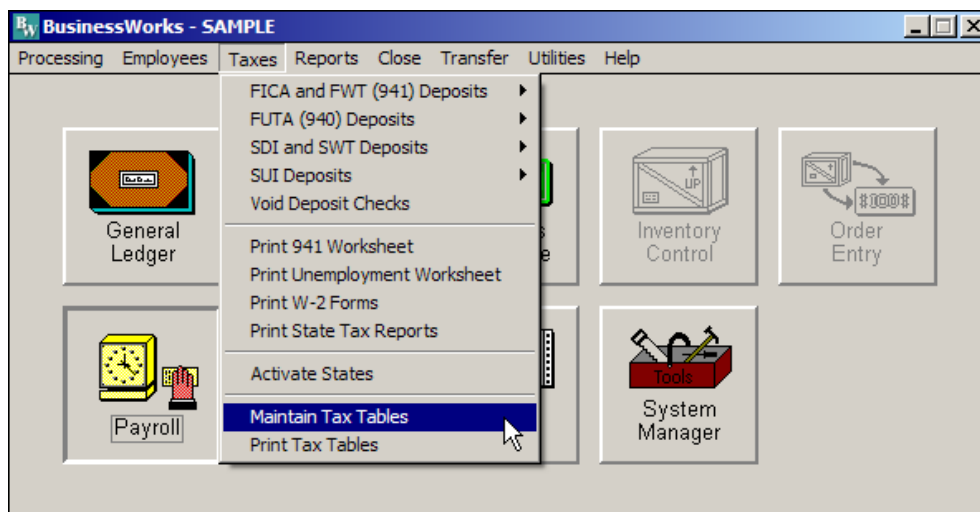
### Overview

Effective January 1, 2026, the Internal Revenue Service (IRS) is changing the wage withholding tables and other allowances, limits, and rates used to calculate employee withholding amounts. If you do not currently subscribe to BusinessWorks Support, you must manually update Federal tax tables in BusinessWorks. This document provides step-by-step instructions to be performed **AFTER processing your LAST payroll for 2025, and BEFORE processing the FIRST payroll for 2026.**

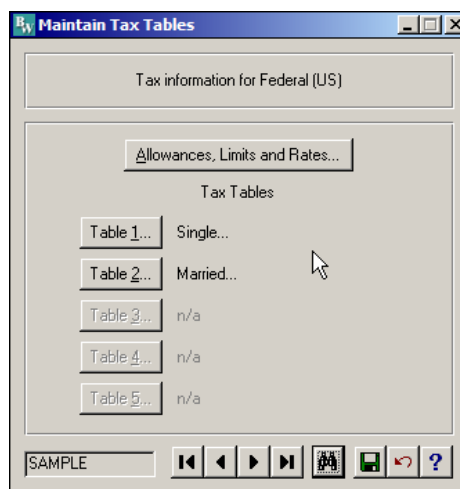
***Multiple Company Considerations: Changes made to your federal tax tables will be reflected in ALL companies – you will perform the following Federal steps only once, regardless of the number of companies you use to process payroll.***

### Adjust Federal Wage Limitations

- 1) In the Payroll Module, go to Taxes > Maintain Tax Tables



- 2) In the Maintain Tax Tables Window, use the “binocular” button at the bottom to find the US (Federal) tax information. The top will read “Tax Information for Federal (US)” after your selection. Click the **Allowances, Limits and Rates** button.



- 3) Make sure the FICA rate for both Company and Employee = **6.200**. The FICA Limit, OASDI portion is **184,500.00**. Set the Withholding Allowance to **4300.00**. Make sure the FUTA rate = **0.600**. Change the Minimum Wage to **15.00** (Illinois). All other values may remain the same (or as shown in the image below).

FICA rate, OASDI portion (Company)	6.200
FICA rate, OASDI portion (Employee)	6.200
FICA limit, OASDI portion	184500.00
FICA rate, Medicare portion	1.450
Ag employee FICA start	150.00
FUTA rate	0.600
FUTA taxable wage limit	7000.00
Withholding allowance	4300.00
Minimum Wage	15.00

OK Cancel How Do I...

**NOTE** - In addition to withholding Medicare tax at 1.45%, you must withhold a 0.9% Additional Medicare Tax from wages you pay to an employee in excess of \$200,000 in a calendar year. You are required to begin withholding Additional Medicare Tax in the pay period in which you pay wages in excess of \$200,000 to an employee and continue to withhold it each pay period until the end of the calendar year. Additional Medicare Tax is only imposed on the employee. There is no employer share of Additional Medicare Tax. All wages that are subject to Medicare tax are subject to Additional Medicare Tax withholding if paid in excess of the \$200,000 withholding threshold. Contact FLI if you have any employees whose gross wages exceed \$200,000.

- 4) After changing the Limits listed in Step 3, click OK at the bottom of the screen. This will return you to the Maintain Tax Tables screen.
- 5) Click Save in the toolbar at the bottom of the Maintain Tax Tables screen (the button with the green diskette image).
- 6) Click the **Table 1 (Single)** button



### Adjust Federal Wage Limitations (continued)

- 7) In the Single Tax Table, select the first line in the table, and then click the Delete button. Repeat until all lines are removed except the last line (system will not allow you to delete the last line. Use the chart below to enter each line starting from the first line (0.00 – 7500.00 – 0.00 – 0.000). After entering each line as listed click Accept, then repeat this step until all lines are entered. Click on the last line and click the Edit button on the right side of the window. Enter the amounts shown below for the last line and click Accept. After entering the last line, if the Base Amount does not show the amount listed below (192979.25), click the Recalculate Bases button at the top and it will correct it. Click OK when finished.

At least,	but less than	Base amount	+ Rate %	x Amount over
0.00		0.00	0.000	0.00
0.00	7500.00	0.00	0.000	0.00
7500.00	19900.00	0.00	10.000	7500.00
19900.00	57900.00	1240.00	12.000	19900.00
57900.00	113200.00	5800.00	22.000	57900.00
113200.00	209275.00	17966.00	24.000	113200.00
209275.00	263725.00	41024.00	32.000	209275.00
263725.00	648100.00	58448.00	35.000	263725.00
648100.00	No limit	192979.25	37.000	648100.00

**NOTE** – If you need to add a line, change the all lines up to the last line, then click the Recalculate bases button at the top, then enter the new line into the blank fields, click Accept. The new line will be inserted just above the last line, and the last line will automatically calculate to the correct amounts, although you may need to Edit the last line to change the rate %.

## Adjust Federal Wage Limitations (continued)

- 8) Click the **Table 2 (Married)** button
- 9) In the Married Tax Table, select the first line in the table, and then click the Delete button. Repeat until all lines are removed except the last line (system will not allow you to delete the last line. Use the chart below to enter each line starting from the first line (0.00 – 19300.00 – 0.00 – 0.000). After entering each line as listed click Accept, then repeat this step until all lines are entered. Click on the last line and click the Edit button on the right side of the window. Enter the amounts shown below for the last line and click Accept. After entering the last line, if the Base Amount does not show the amount listed below (206583.50), click the Recalculate Bases button at the top and it should correct it. Click OK when finished.

At least,	but less than	Base amount	+ Rate %	x Amount over
0.00	19300.00	0.00	0.000	0.00
19300.00	44100.00	0.00	10.000	19300.00
44100.00	120100.00	2480.00	12.000	44100.00
120100.00	230700.00	11600.00	22.000	120100.00
230700.00	422850.00	35932.00	24.000	230700.00
422850.00	531750.00	82048.00	32.000	422850.00
531750.00	788000.00	116896.00	35.000	531750.00
788000.00	No limit	206583.50	37.000	788000.00

**NOTE** – If you need to add a line, change the all lines up to the last line, then click the Recalculate bases button at the top, then enter the new line into the blank fields, click Accept. The new line will be inserted just above the last line, and the last line will automatically calculate to the correct amounts, although you may need to Edit the last line to change the rate %.

- 10) Click Save in the toolbar at the bottom of the Maintain Tax Tables screen (the button with the green diskette image), and close the Maintain Tax Tables screen.

## **Payroll Processing**

After completing the steps listed above, continue processing your 2026 payroll as you normally would. BusinessWorks will calculate withholdings based on the tax information you entered.

## **\*\*Special Considerations for 2026\*\***

If you have employees who reside in states other than Illinois you will need to contact their state Department of Revenue to learn if their rates or limits have changed for 2026.

Additional changes may be required due to Acts of Congress that become law after publication of this document. Payroll tax law changes could result in a requirement to purchase software upgrades to remain compliant. Additional information will be provided upon enactment of any additional payroll tax law changes.

Form W-4 for 2020 and beyond is very different than prior versions. New hires after January 1, 2020 must use this new form. Employees hired prior to January 1, 2020 don't need to fill out the new form unless they need to update their withholdings. Please refer to the **"2020 Form W-4 Overview"** and **"How to use 2020 Form W-4 for BusinessWorks v2011 and older"** documents in the BusinessWorks page on FLIsupport.com.

You may be required to list Employer Provided Health costs on your employee's 2025 W-2 forms. Please consult with your CPA and, if necessary, read the document **"W-2 Reporting – Employer Provided Health"** in the BusinessWorks page on FLIsupport.com.

## **Disclaimers**

FLI provides this information as a convenience and service to assist our customers in making payroll tax changes to their BusinessWorks software to remain compliant with Federal and State statutes. All rates and values listed in this document were obtained from the Illinois Department of Employment Security (IDES) and the Internal Revenue Services (IRS) Table 7 – Annual Payroll Period, and are believed to be accurate and correct. FLI assumes NO responsibility for inaccurate, incorrect, or omitted information regarding any amounts or rates listed in this document. Further, FLI assumes NO responsibility for any damages resulting from any actions taken, or not taken, based on the information provided in this document.

## **Getting Assistance**

Please contact your accountant, IRS, IDOR, IDES, or FLI Customer Support if you have any questions regarding the information provided in this document